

Vilhelmas Cepinski,  
CONCERTO pour VIOLON N°2  
op 85

Timpani

FRANCOISE CHOVEAUX

PREMIER MOUVEMENT

♩ = 60

*ff* *pp* *ppp* *ff* *p* *pp*

5

*fff*

8

Rall . . . douloureux -

♩ = 60

12

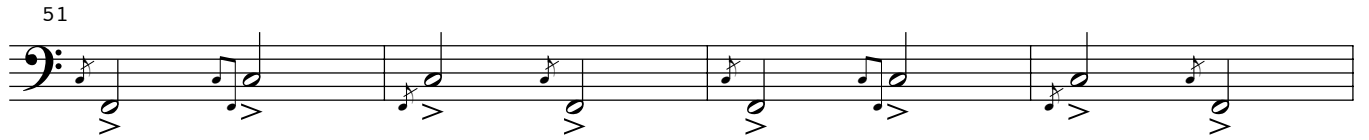
17

A 6

27

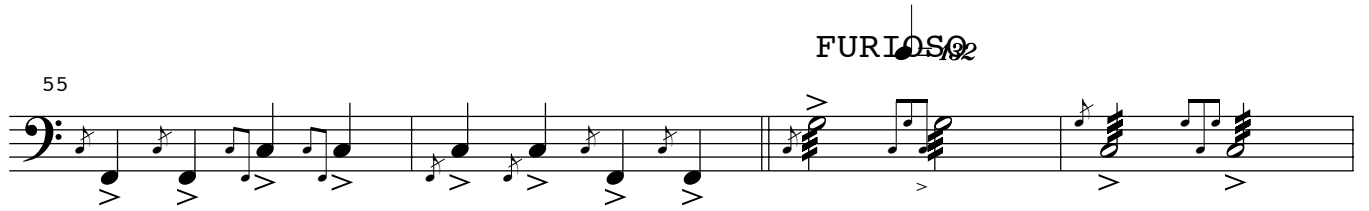
B 13 8

51



55

FURIOSO



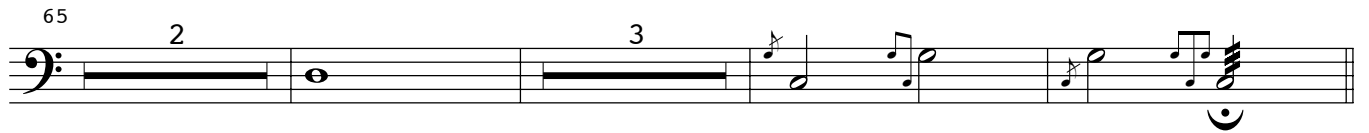
59

2

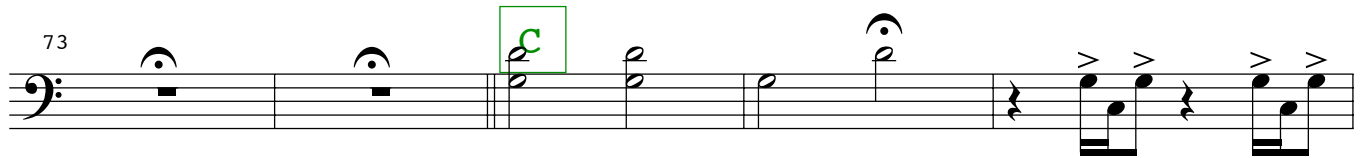


65

2 3

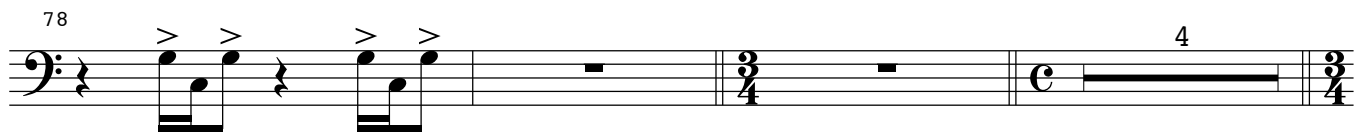


73



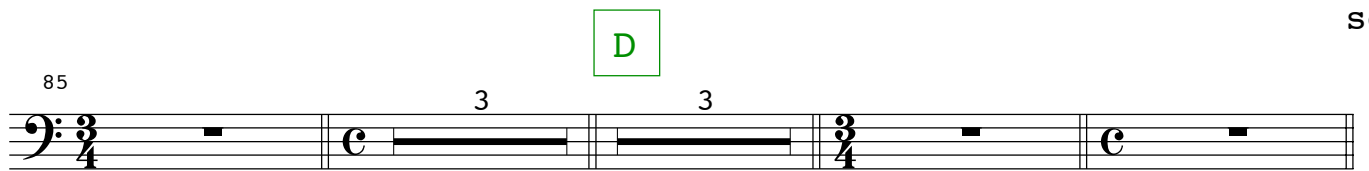
78

4



85

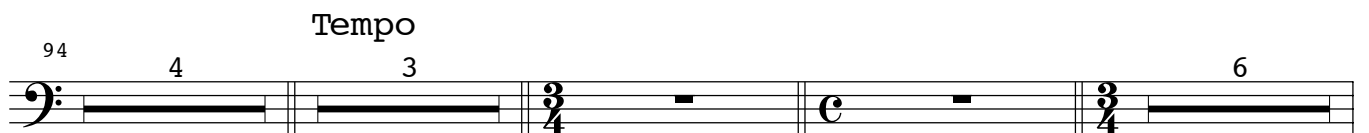
D



94

Tempo

4 3 6



Concerto violon -mvt 1-timp

109

115

Presser

121

# SECOND MOUVEMENT

## Timpani

Lent et tr s expressif

$\bullet = 42$

18      **A**      10      **B**      7

18      10      7

CADENCE

37

6

**C**  
46

5

5

55

59

63

67

# TROISIEME MOUVEMENT

## Kauna war museum

Timpani

• = 144

16 A 19 B 4 5

46 RALL . . . . .

52

RALL . . . . . tempo • = 144

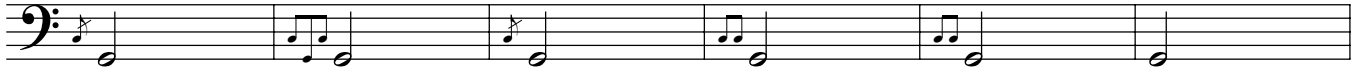
56 4 2

64 C 5 17

89

94 CADENCE L ger • = 76  
12

110



116

tr s rythm , sec et d cid

A musical staff in bass clef. Measure 116: G2, A2, B2, C3, D3, E3. Measure 117: Rest. Measure 118: C-sharp 3, D4, E4, F4, G4, A4, B4, C5. Measure 119: Rest. Measure 120: G4, F4, E4, D4, C4, B3, A3, G3. Measure 121: G3, F3, E3, D3, C3, B2, A2, G2.

• = 76  
21  
• = 120

142



147



153

A musical staff in bass clef containing six measures of music. Measure 153: G2, A2, B2, C3, D3, E3. Measure 154: G2, A2, B2, C3, D3, E3. Measure 155: G2, A2, B2, C3, D3, E3. Measure 156: G2, A2, B2, C3, D3, E3. Measure 157: G2, A2, B2, C3, D3, E3. Measure 158: G2, A2, B2, C3, D3, E3.

D

159



165

