

Vilhelmas Cepinski,
CONCERTO pour VIOLON N°2
op 85

Contrabass

FRANCOISE CHOVEAUX

PREMIER MOUVEMENT

♩ = 60

pp ppp pp fff
Rall
♩ = 60

6 2 8

19 **A**

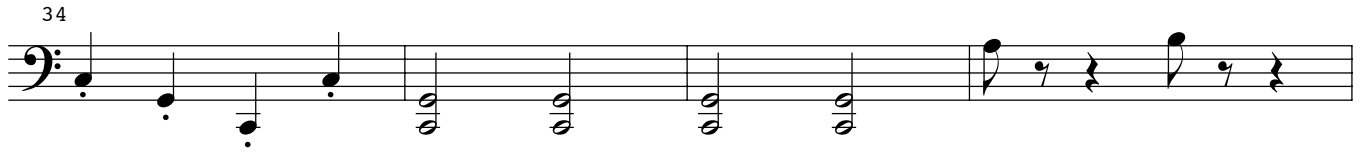
22

26

30

Concerto violon -mvt 1-contrebass

34

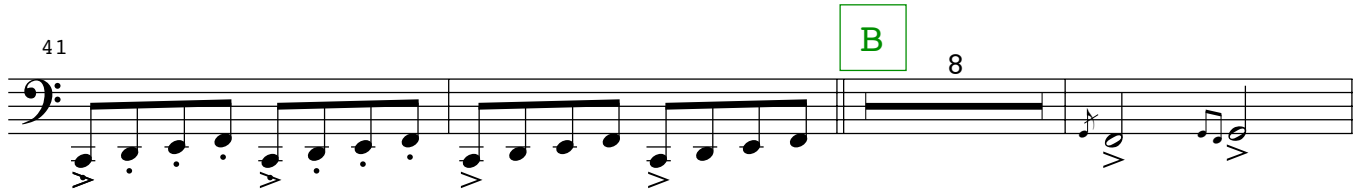


38

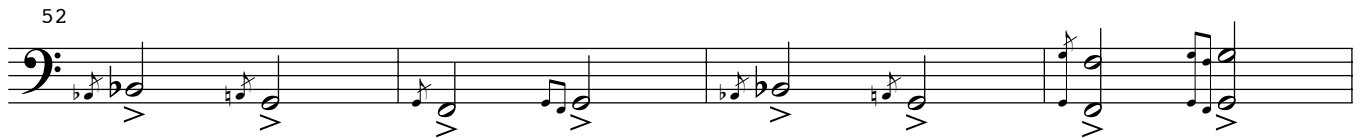


41

B 8

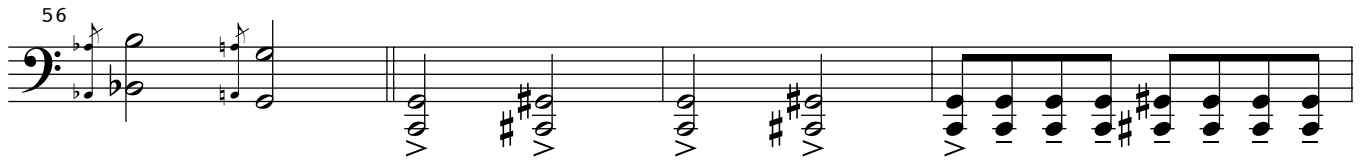


52

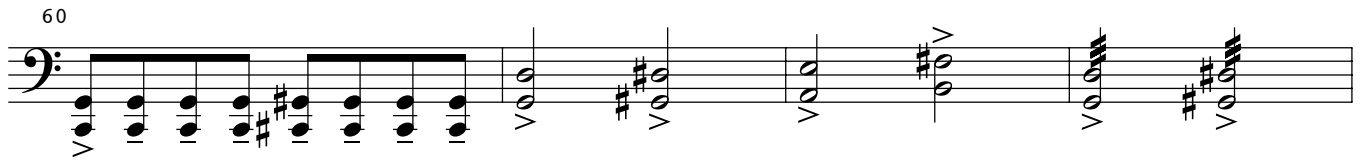


FURIOSO

56



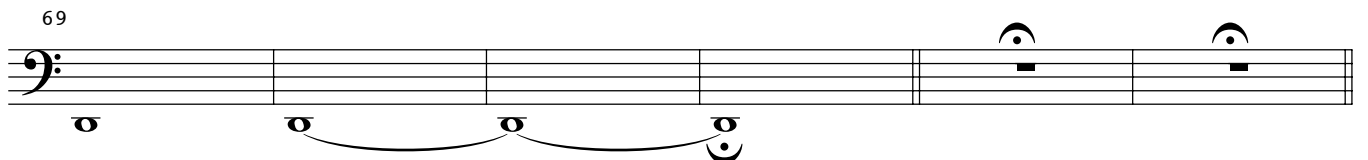
60



64



69



75 **C** 5 4 3

A musical staff in bass clef with a common time signature 'C'. It contains three measures of whole rests. Above the first measure is the number '5', above the second is '4', and above the third is '3'. A green box containing the letter 'C' is positioned above the first measure.

89 **D** 3 4

A musical staff in bass clef with a 3/4 time signature. It contains two measures of whole rests. Above the first measure is the number '3', and above the second is '4'. A green box containing the letter 'D' is positioned above the first measure.

sempre non legato

98 **Tempo**

A musical staff in bass clef starting at measure 98. The tempo marking 'Tempo' is placed above the staff. The music consists of eighth notes with slurs and accents.

100 3 3 3

A musical staff in bass clef starting at measure 100. It features eighth notes with slurs and accents. Above the staff, the number '3' is written above three groups of notes.

102 3 3

A musical staff in bass clef starting at measure 102. It features eighth notes with slurs and accents. Above the staff, the number '3' is written above two groups of notes. The notes from measure 102 onwards are highlighted in red.

105

A musical staff in bass clef starting at measure 105. It features eighth notes with slurs and accents. The notes from measure 105 onwards are highlighted in red.

108

A musical staff in bass clef starting at measure 108. It features eighth notes with slurs and accents. The notes from measure 108 onwards are highlighted in red.

111

A musical staff in bass clef starting at measure 111. It features eighth notes with slurs and accents. The notes from measure 111 onwards are highlighted in red.

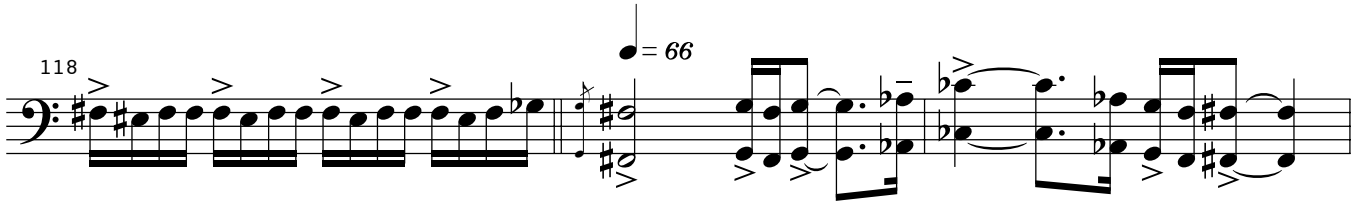
114



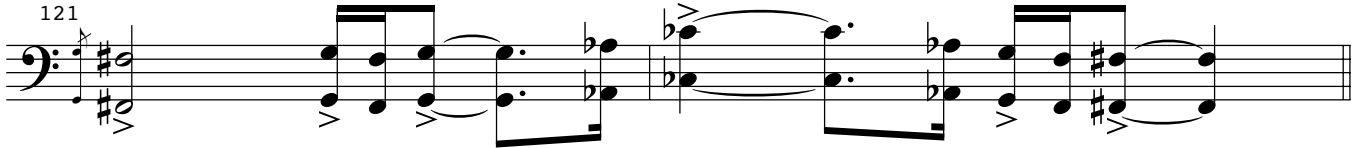
116



118

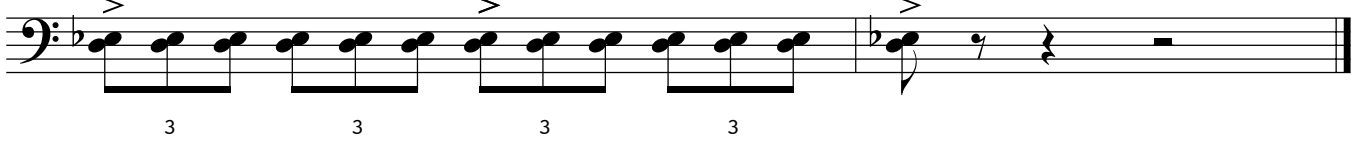


121



Presser

123



SECOND MOUVEMENT

Contrabass

Lent et très expressif

♩ = 42
16

A

20

B

24

30

34

3

6

6

CADENCE

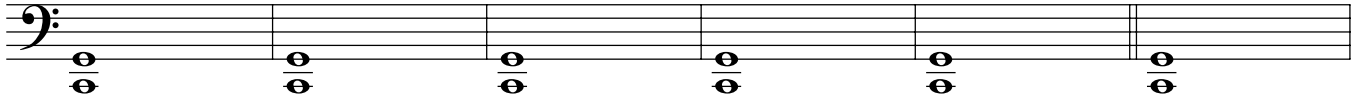
37

C

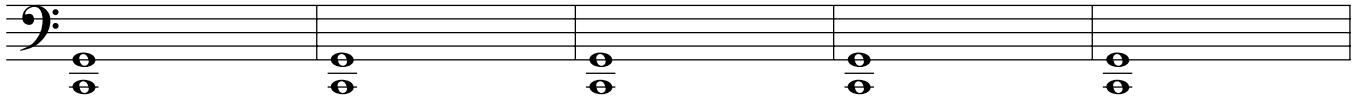
41

Concerto violon - mvt 2-contrebass

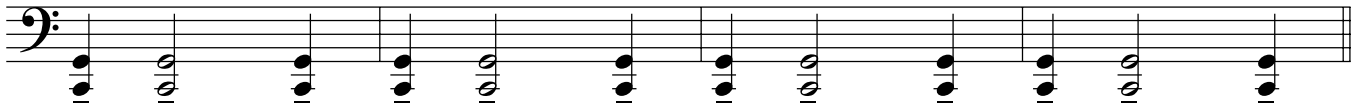
47



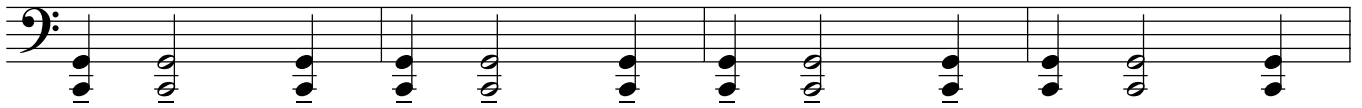
53



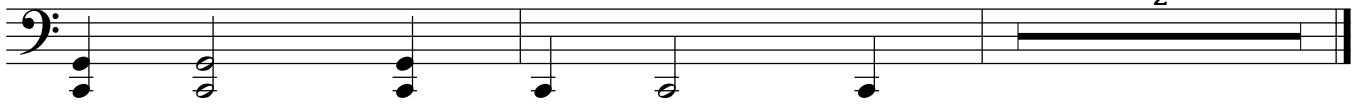
58



62



66



TROISIEME MOUVEMENT

Kauna war museum

Contrabass

♩ = 144

Measures 1-5 of the contrabass part. Measure 1 contains six eighth notes with accents. Measure 2 contains a whole rest. Measure 3 contains a quarter rest. Measure 4 contains a quarter note with an accent. Measure 5 contains a triplet of eighth notes with an accent.

Measures 6-9 of the contrabass part. Measures 6 and 7 contain eighth notes with accents and sharps. Measures 8 and 9 contain eighth notes with accents and sharps.

Measures 10-13 of the contrabass part. Measures 10 and 11 contain eighth notes with accents and sharps. Measures 12 and 13 contain eighth notes with accents and sharps.

Measures 14-17 of the contrabass part. Measures 14 and 15 contain eighth notes with accents and sharps. Measures 16 and 17 contain eighth notes with accents and sharps.

Measures 18-21 of the contrabass part. Measure 18 starts with a green box containing the letter 'A' above the first eighth note. Measures 18 and 19 contain eighth notes with accents and sharps. Measures 20 and 21 contain eighth notes with accents and sharps.

Measures 22-25 of the contrabass part. Measures 22 and 23 contain eighth notes with accents and sharps. Measures 24 and 25 contain eighth notes with accents and sharps.

Measures 26-29 of the contrabass part. Measures 26 and 27 contain eighth notes with accents and sharps. Measures 28 and 29 contain eighth notes with accents and sharps.

30

Measures 30-33: Bass clef, key signature of one sharp (F#). Measure 30: quarter notes G2, A2, B2, C3. Measure 31: whole rest. Measure 32: quarter notes D3, E3, F#3, G3. Measure 33: whole rest.

34

Measures 34-37: Bass clef, key signature of one sharp (F#). Measure 34: quarter notes G2, A2, B2, C3. Measure 35: whole rest. Measure 36: quarter notes D3, E3, F#3, G3 with accents (>). Measure 37: whole rest. A green box with the letter 'B' is positioned above measure 37.

38

Measures 38-40: Bass clef, key signature of one sharp (F#). Measure 38: quarter notes G2, A2, B2, C3 with accents (>). Measure 39: quarter notes D3, E3, F#3, G3 with accents (>). Measure 40: quarter notes A2, B2, C3, D3 with accents (>).

41

Measures 41-44: Bass clef, key signature of one sharp (F#). Measures 41-44: Continuous eighth-note pattern: G2, A2, B2, C3, D3, E3, F#3, G3, with accents (>) under each note.

45

RALL

Measures 45-49: Bass clef, key signature of one sharp (F#). Measure 45: quarter notes G2, A2, B2, C3 with accents (>). Measure 46: whole rest. Measure 47: quarter notes D3, E3, F#3, G3. Measure 48: quarter notes A2, B2, C3, D3. Measure 49: quarter notes E3, F#3, G3, A2.

50

Measures 50-53: Bass clef, key signature of one sharp (F#). Measure 50: quarter notes G2, A2, B2, C3. Measure 51: quarter notes D3, E3, F#3, G3. Measure 52: quarter notes A2, B2, C3, D3. Measure 53: quarter notes E3, F#3, G3, A2.

54

RALL tempo $\bullet = 144$

Measures 54-59: Bass clef, key signature of one sharp (F#). Measure 54: quarter notes G2, A2, B2, C3. Measure 55: triplet quarter notes D3, E3, F#3. Measure 56: triplet quarter notes G3, A3, B3. Measure 57: triplet quarter notes C4, D4, E4. Measure 58: triplet quarter notes F#4, G4, A4. Measure 59: quarter notes B3, C4, D4, E4.

61

Measures 61-65: Bass clef, key signature of one sharp (F#). Measure 61: half note G2 with a '2' above it. Measure 62: quarter notes A2, B2, C3, D3 with accents (>). Measure 63: quarter notes E3, F#3, G3, A3 with accents (>). Measure 64: quarter notes B3, C4, D4, E4 with accents (>). Measure 65: quarter notes F#4, G4, A4, B4 with accents (>).

66

70

C

74

78

82

86

CADENCE

96

• = 76 L ger

6

2

108

114 $\bullet = 76$

120

126

132

$\bullet = 120$ tr s rythm , sec et d cid
140 8

151

155 D

159